



OLIVE

@PROTON CITY

MASTER PLAN

PARCEL 18



LAYOUT SITE PLAN

PARCEL 18A-5 (OLIVE)

2-STOREY SEMI-D

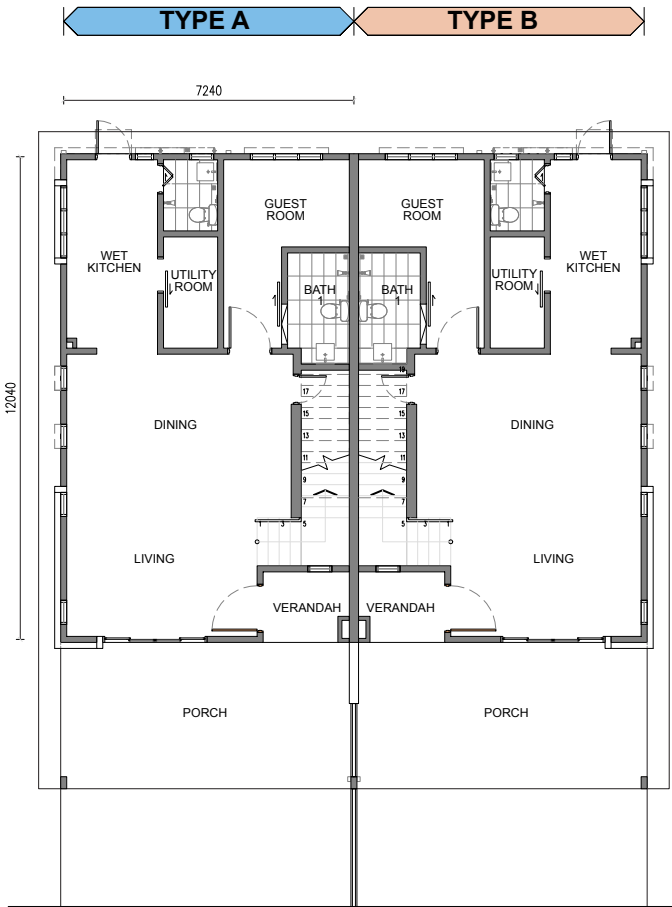
Total Units
42

BUNGALOW UNIT

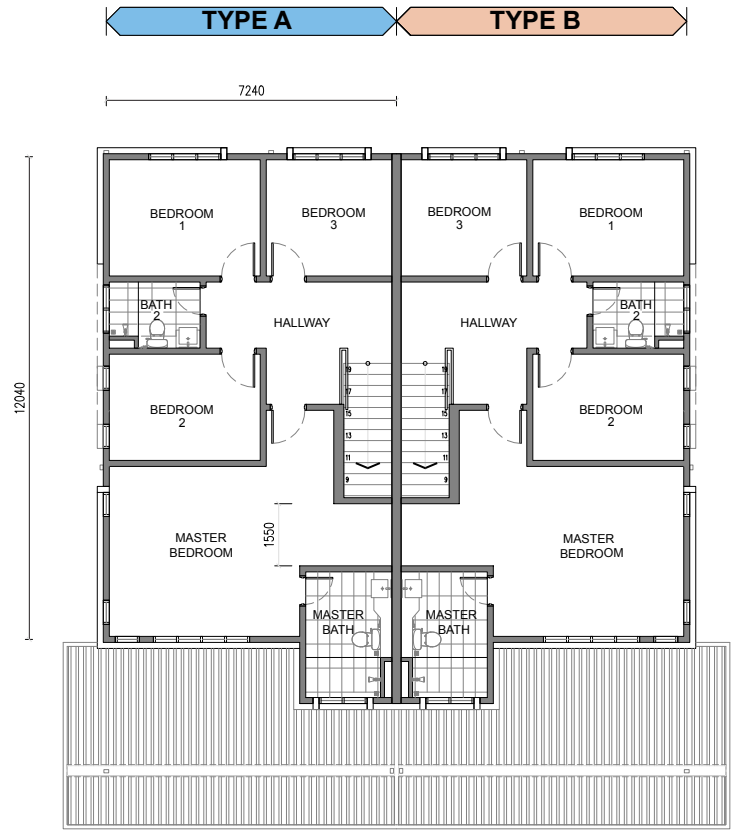
Total Units
1



TYPICAL FLOOR PLAN



GROUND FLOOR PLAN



FIRST FLOOR PLAN

TYPE

A

BEDROOMS

5 + 1

BATHROOMS

4

APPROX. SQFT

2,200 sqft

UNIT NUMBER

1, 3, 5, 7, 9, 11, 13, 15, 36

TYPE

B

BEDROOMS

5 + 1

BATHROOMS

4

APPROX. SQFT

2,200 sqft

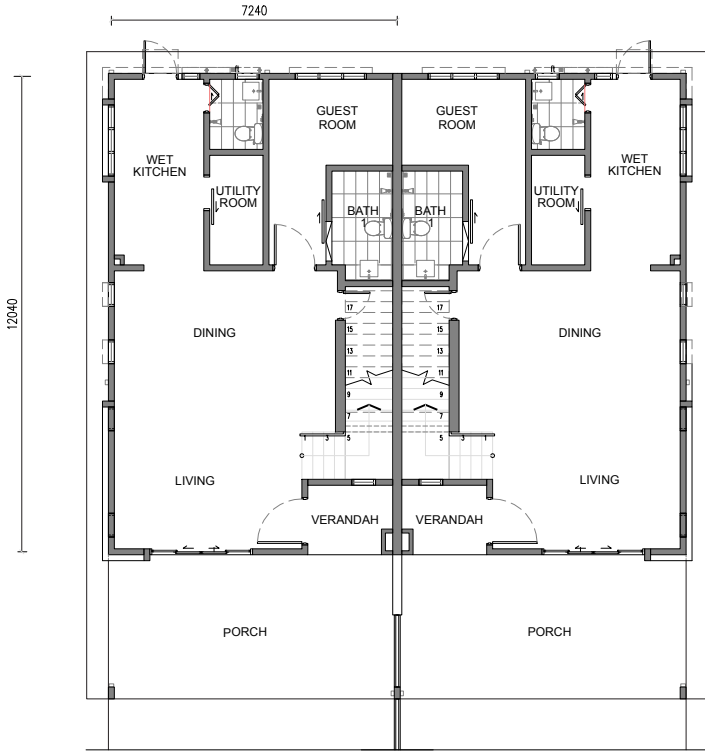
UNIT NUMBER

2, 4, 6, 8, 10, 12, 14, 16, 37



TYPICAL FLOOR PLAN

TYPE C TYPE D



GROUND FLOOR PLAN

TYPE C TYPE D



FIRST FLOOR PLAN

TYPE
C

BEDROOMS
4 + 1

BATHROOMS
4

APPROX. SQFT
2,194 sqft

UNIT NUMBER
19, 42

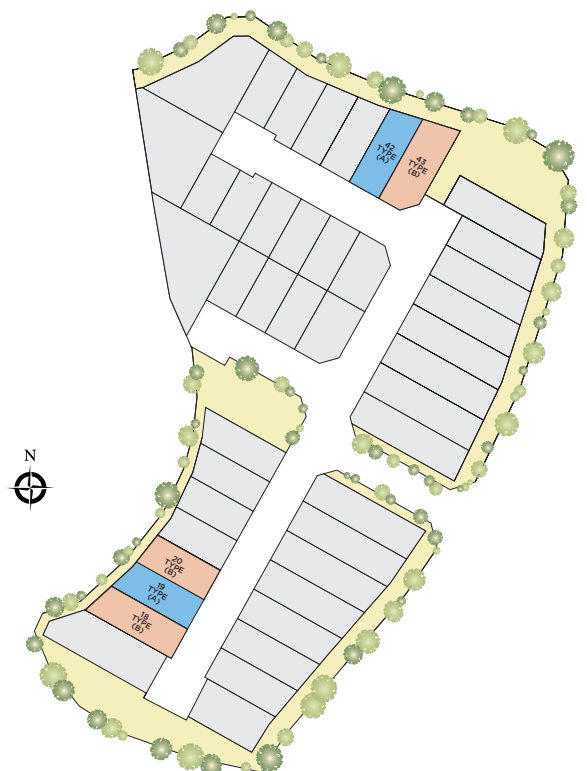
TYPE
D

BEDROOMS
4 + 1

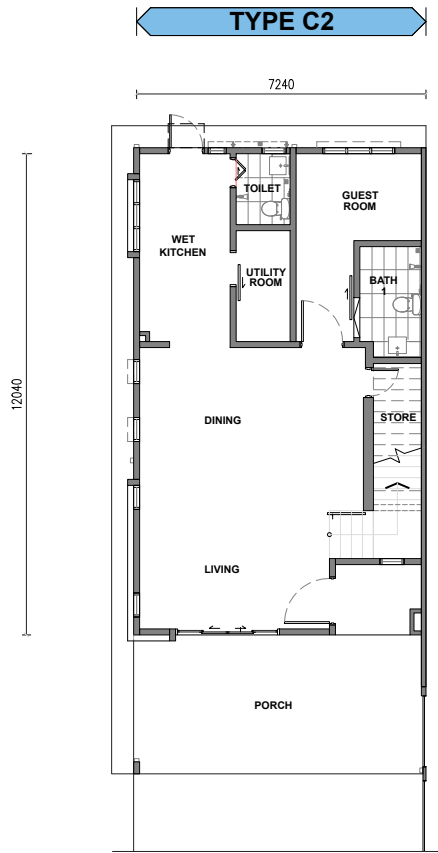
BATHROOMS
4

APPROX. SQFT
2,194 sqft

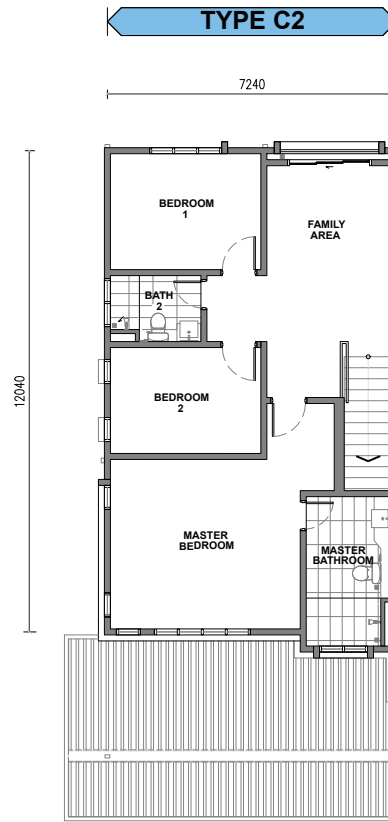
UNIT NUMBER
18, 20, 43



TYPICAL FLOOR PLAN



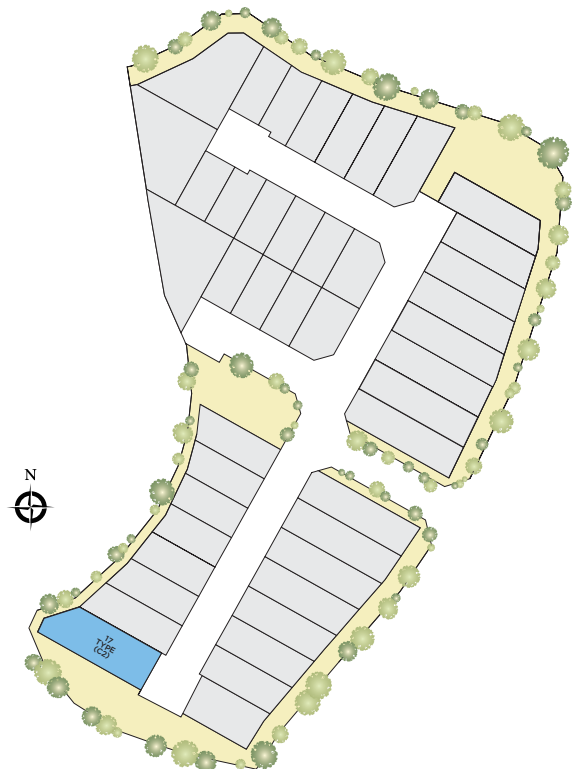
GROUND FLOOR PLAN



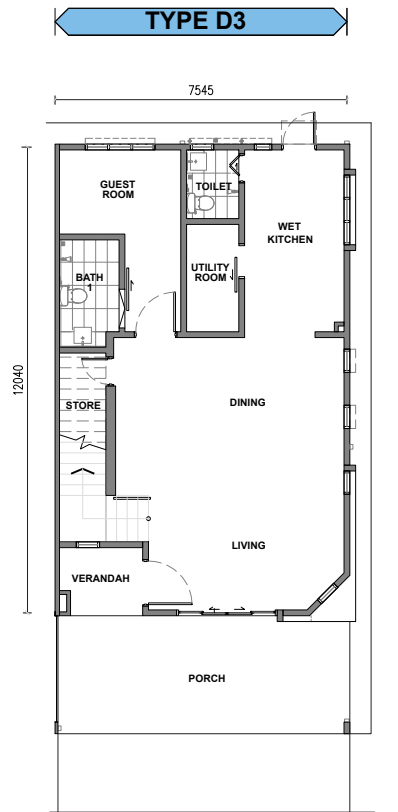
FIRST FLOOR PLAN

TYPE
C2

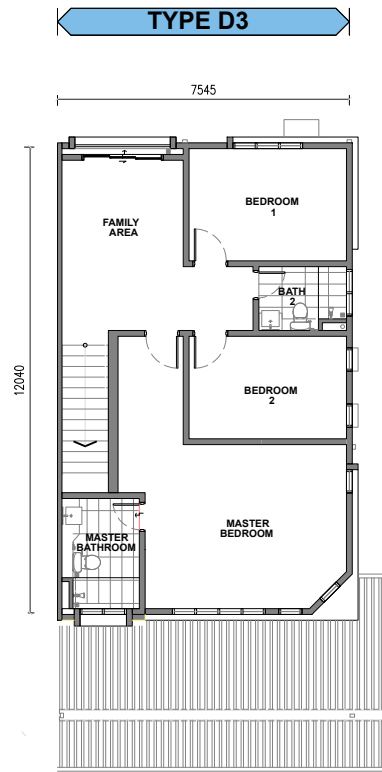
- BEDROOMS
4 + 1
- BATHROOMS
4
- APPROX.SQFT
2,162 sqft
- UNIT NUMBER
17



TYPICAL FLOOR PLAN



GROUND FLOOR PLAN



FIRST FLOOR PLAN

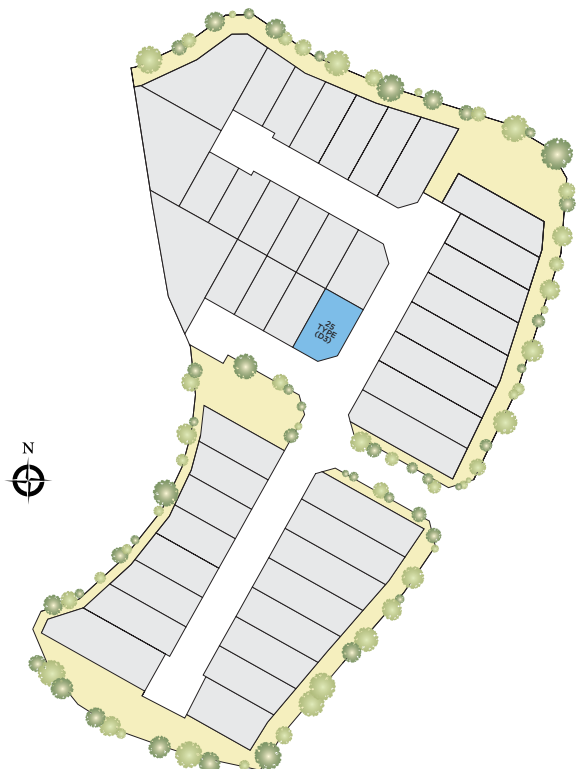
TYPE
D3

BEDROOMS
4 + 1

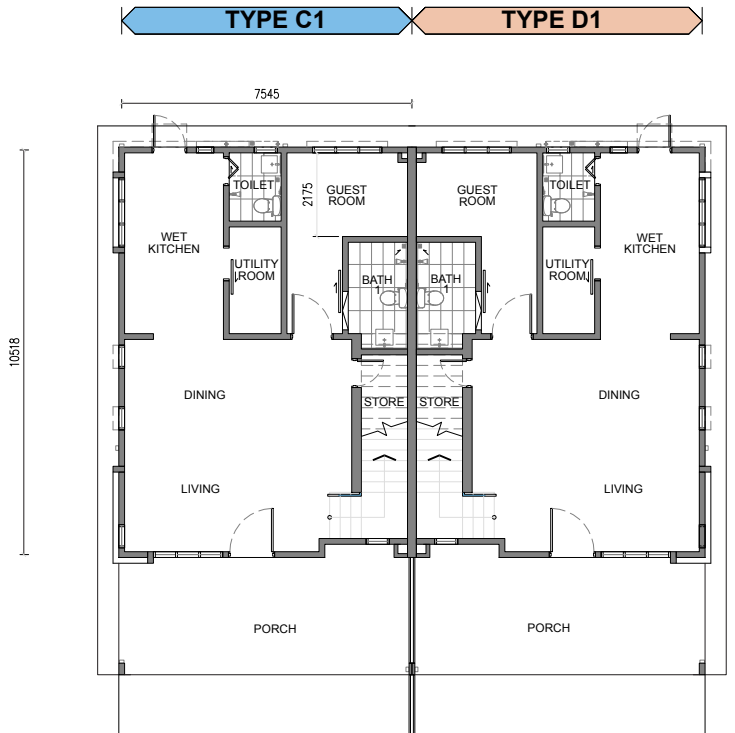
BATHROOMS
4

APPROX. SQFT
2,193 sqft

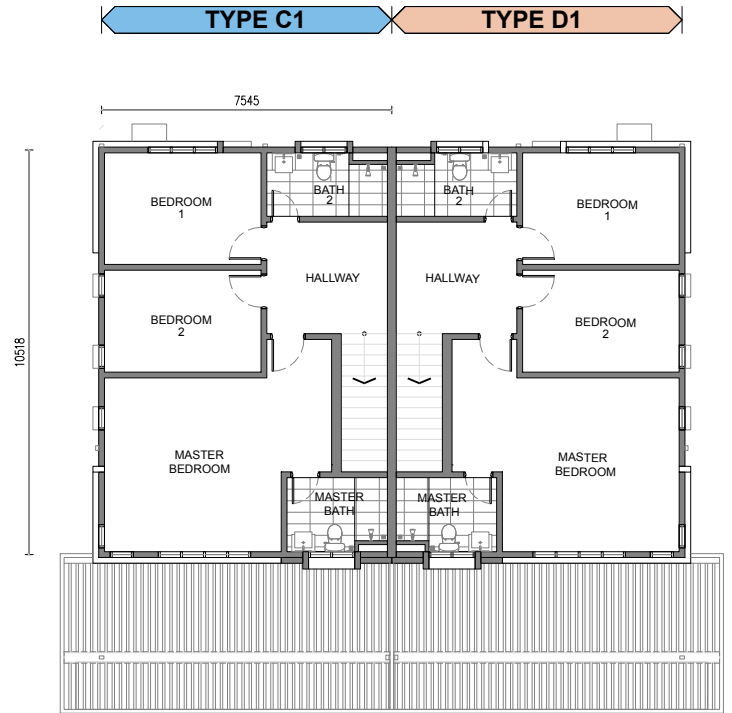
UNIT NUMBER
25



TYPICAL FLOOR PLAN



GROUND FLOOR PLAN



FIRST FLOOR PLAN

TYPE **C1**

BEDROOMS **4 + 1**

BATHROOMS **4**

APPROX.SQFT **2,086 sqft**

UNIT NUMBER **34, 38**

TYPE **D1**

BEDROOMS **4 + 1**

BATHROOMS **4**

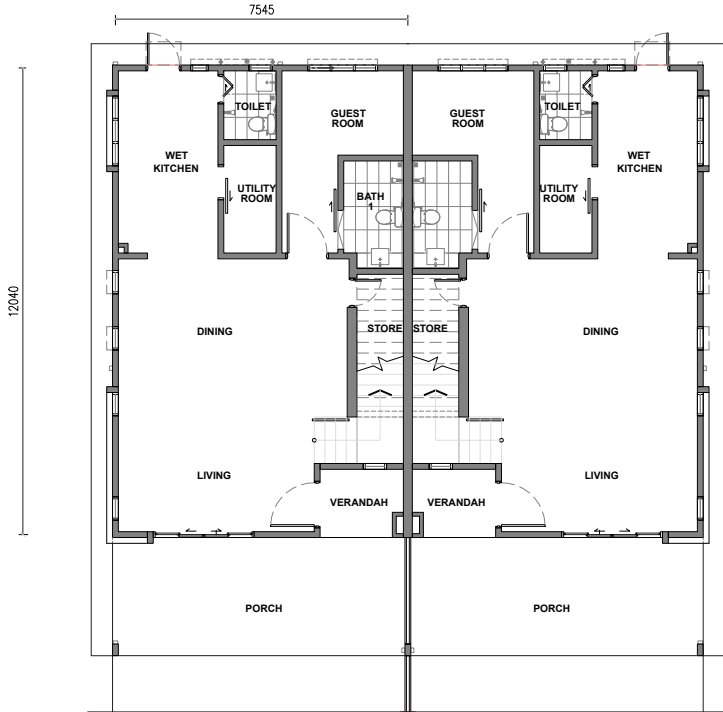
APPROX.SQFT **2,086 sqft**

UNIT NUMBER **35, 39**



TYPICAL FLOOR PLAN

TYPE C3 TYPE D2



GROUND FLOOR PLAN

TYPE C3 TYPE D2



FIRST FLOOR PLAN

TYPE
C3

BEDROOMS

4 + 1

BATHROOMS

4

APPROX.SQFT

2,200 sqft

UNIT NUMBER

21, 23, 26, 28, 32, 40

TYPE
D2

BEDROOMS

4 + 1

BATHROOMS

4

APPROX.SQFT

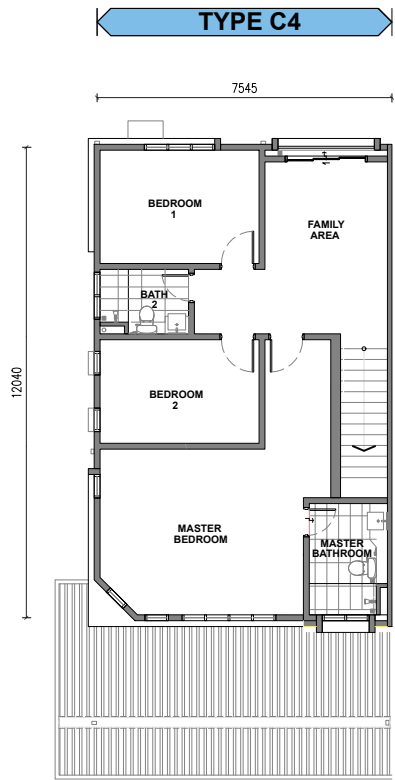
2,200 sqft

UNIT NUMBER

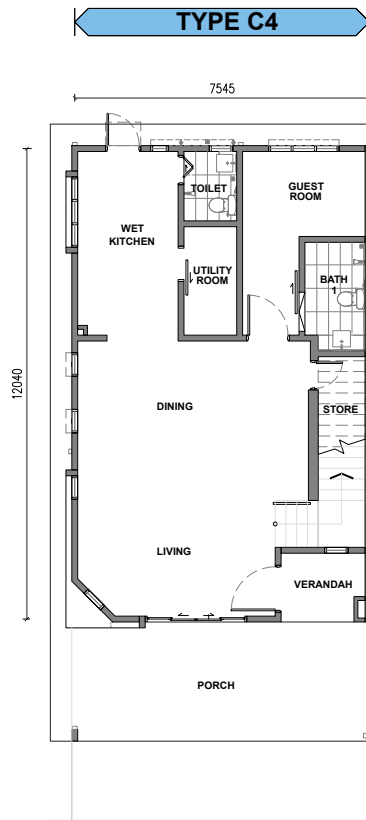
22, 24, 27, 31, 32, 41



TYPICAL FLOOR PLAN



FIRST FLOOR PLAN



GROUND FLOOR PLAN

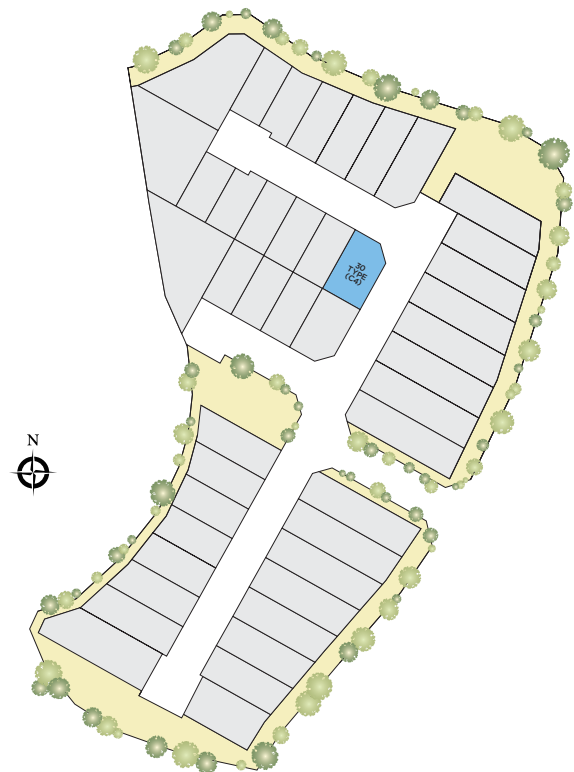
TYPE
C4

BEDROOMS
4 + 1

BATHROOMS
4

APPROX.SQFT
2,193 sqft

UNIT NUMBER
30



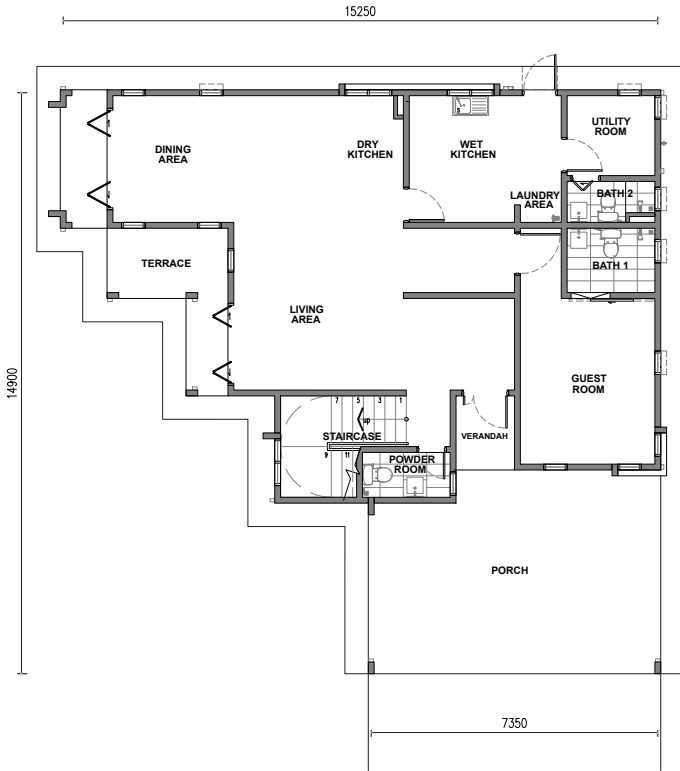
TYPE
A,B,C,D,C1,D1,C2,D2,C3,D2,C3,D3,C4
SPECIFICATIONS



STRUCTURE	: Concrete		
WINDOWS	: Aluminium Frame Casement Window		
IRONMONGERY	: Quality Locksets With Accessories		
ROOF COVERING	: Concrete Roof Tiles		
	Metal Roofing		
ROOF FRAMING	: Steel Trusses		
GENERAL WALL	: Cement Sand Brick		
PARTY WALL	: Clay Brick		
WALL FINISHES	: General Wall	Plaster and Paint	
	Kitchen	Tiles , Plaster and Paint	
	Bedrooms	Plaster and Paint	
	Bathrooms	Tiles	
	Toilet	Tiles	
	Store	Plaster and Paint	
		Cement Render (Type C1 & D1)	
	Staircase	Plaster and Paint	
CEILING	: Ground Floor	Skim Coat, Plasterboard	
	: First Floor	Plasterboard	
DOORS	: Verandah	Timber Door	
	Living	Aluminium Frame Glass Sliding Door	
	Kitchen	Timber Door	
	Guest Room	Timber Flush Door	
	Utility Room	Sliding Timber Flush Door	
	Bedrooms	Timber Flush Door	
	Bathroom 1	Sliding Timber Flush Door	
	Bathrooms	Timber Flush Door	
	Toilet	Acrylic Panel Bifold Door	
	Store	Timber Flush Door	
FLOOR FINISHES	: Ground Floor		
	Driveway	Cement Render Broom Finish	
	Carporch	Tiles	
	Verandah	Tiles	
	Living	Tiles	
	Dining	Tiles	
	Kitchen	Tiles	
	Guest Room	Tiles	
	Utility Room	Tiles	
	Bathrooms	Tiles	
	Toilet	Tiles	
	Store	Tiles	
	Staircase	Tiles	
	: First Floor		
	Bedrooms	Tiles	
	Bathrooms	Tiles	
	Family Area (Type C,C2,C3,C4,D,D2,D3)	Tiles	
SANITARY FITTINGS	: Wash Basin		
	Water Closet		
	Shower Rose		
	Tap		
	Floor Trap		
	Kitchen Sink		
ELECTRICAL INSTALLATION		TYPE (A & B)	TYPE (C,C1,C2,C3,C4,D,D1,D2 & D3)
	Light Point	33	32
	Ceiling Fan Point	9	9
	13amp Power Point	29	27
	Air Cond Point	6	6
	Water Heater Point	4	4
	Astro Point	1	1
	Telephone / Internetphone/ Data Point	1	1
	Door Bell Point	1	1
	Autogate Point	1	1
	Gate Post Light Point	2	2
	Light Point (Yard)	1	1

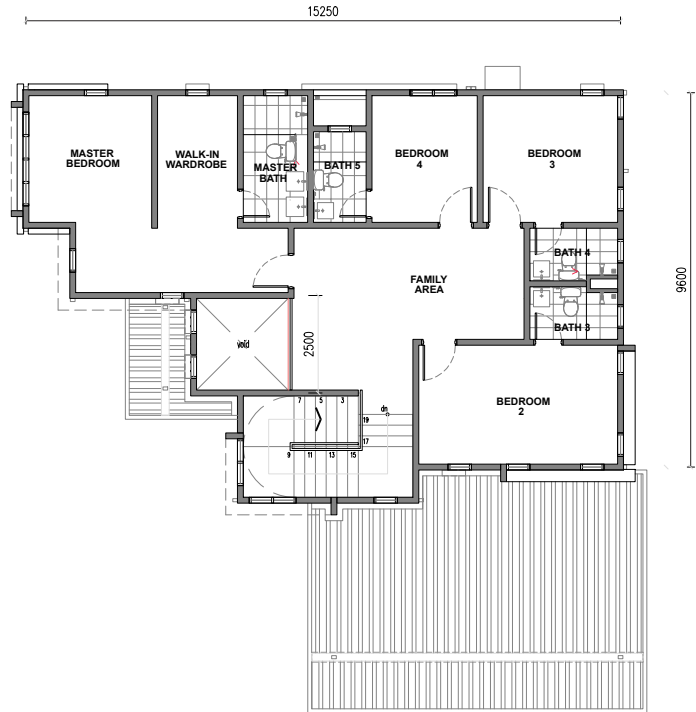
TYPICAL FLOOR PLAN

BUNGALOW



FIRST FLOOR PLAN

BUNGALOW



GROUND FLOOR PLAN

TYPE BUNGALOW

BEDROOMS **5 + 1**
 BATHROOMS **6**
 APPROX.SQFT **3,090 sqft**
 UNIT NUMBER **29**





STRUCTURE	: Concrete	
WINDOWS	: Aluminium Frame Casement Window	
	Tiles	
	Steel Frame	
IRONMONGERY	: Quality Locksets With Accessories	
ROOF COVERING	: Concrete Roof Tiles	
	Metal Roofing	
ROOF FRAMING	: Steel Trusses	
GENERAL WALL	: Cement Sand Brick	
PARTY WALL	: Clay Brick	
WALL FINISHES	: General Wall	Plaster and Paint
	Dry Kitchen	Plaster and Paint
	Wet Kitchen	Tiles , Plaster and Paint
	Bedrooms	Plaster and Paint
	Bathrooms	Tiles
	Staircase	Plaster and Paint
CEILING	: Ground Floor	Skim Coat, Plasterboard Ceilings
	: First Floor	Plasterboard Ceilings
DOORS	: Verandah	Timber Door
	Living	Aluminium Frame Glass Sliding Door
	Dining	Aluminium Frame Glass Sliding Door
	Wet Kitchen	Timber Door
	Guest Room	Timber Flush Door
	Utility Room	Timber Flush Door
	Bedrooms	Timber Flush Door
	Bathrooms	Timber Flush Door
	Bathroom 1	Sliding Timber Flush Door
	Bathroom 2	Acrylic Panel Bifold Door
	Powder Room	Timber Flush Door
FLOOR FINISHES	: Ground Floor	
	Driveway	Cement Render Broom Finish
	Carporch	Tiles
	Verandah	Tiles
	Living	Tiles
	Dining	Tiles
	Kitchen	Tiles
	Guest Room	Tiles
	Utility Room	Tiles
	Bathrooms	Tiles
	Toilet	Tiles
	Store	Tiles
	Staircase	Tiles
	First Floor	
	Family Area	Tiles
	Bedroom	Tiles
	Bathrooms	Tiles
SANITARY FITTINGS	: Wash Basin	
	Water Closet	
	Shower Rose	
	Tap	
	Floor Trap	
	Kitchen Sink	
ELECTRICAL INSTALLATION	: Light Point	34
	Ceiling Fan Point	10
	13amp Power Point	34
	Air Cond Point	9
	Water Heater Point	6
	Astro Point	1
	Telephone / Internetphone / Data Point	1
	Door Bell Point	1
	Autogate Point	1
	Gate Post Light Point	2
	Light Point (Yard)	1

THE FLAGSHIP TOWNSHIP IN TANJUNG MALIM

Proton City is a 4,000-acre integrated township located only 5km away from Tanjung Malim town. It enjoys great proximity to a host of amenities such as eateries, banks, healthcare & education institutions, train station and North-South Highway.



PROTON CITY SALES GALLERY
No. 1, Warisan Avenue, Jalan Kempas 3A,
Parcel 19, Proton City,
35900 Tanjong Malim, Perak
T 05 459 5858 | 05 459 8989
F 05 459 7979

DRB-HICOM HEAD OFFICE
Level 1, Wisma DRB-HICOM,
No. 2 Jalan Usahawan U1/8, Seksyen U1,
40150 Shah Alam, Selangor
T 03 2052 8500
F 03 2052 8511

05 459 8989
03 2052 8500
glenmarieproperties.com

Developer: Proton City Development Corporation Sdn Bhd, 1st Floor, Wisma DRB-Hicom, No. 2 Jalan Usahawan U1/8, Seksyen U1, 40150 Shah Alam, Selangor. Tel No: 03 2052 8500. Developer's Licence No.: 7223-4/07-2019/02226(L). Validity Period: 03/07/2018 - 02/07/2019. Advertising & Sales Permit No.: 7223-4/07-2019/02226 (P). Validity Period: 03/07/2018 - 02/07/2019. Land Tenure: Freehold. Land Encumbrances: Nil. Express Condition: Nil. Authority Approving Building Plan: Majlis Daerah Tanjong Malim. Building Plan Approval No.: MDTM/KIKB/PB/01/12/2014. Total No. of Units & Price: 1-Storey Terrace (87 units), Min: RM320,850 - Max: RM500,250. 1 1/2-Storey Terrace (82 units), Min: RM446,200 - Max: RM631,350. Expected Date of Completion: August 2020. Bumiputera Discount : 5%

Another Project by



A Member of

